

KEYLINES

EASY-TO-USE ROAD MARKING DESIGN SOFTWARE



Who?

Traffic Management and Road Safety Engineers

What?

Road Marking Design Software

Why?

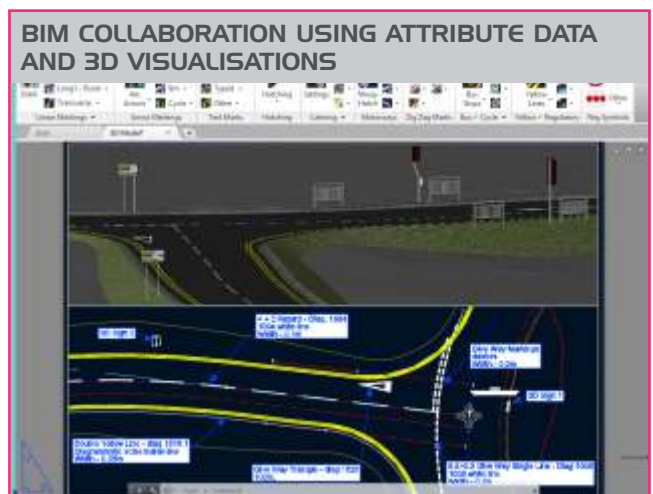
Produce road markings quickly, compliant with the regulations

WHO IS KEYLINES FOR?

KeyLINES is for traffic management and road safety engineers.

WHAT IS KEYLINES?

The UK's leading road marking and traffic management design software, KeyLINES allows engineers to produce road marking and traffic management drawings quickly in AutoCAD.



WHY CHOOSE KEYLINES?

KeyLINES offers a complete range of road markings to assist in the drawing of UK traffic management systems. These markings fully comply with the Traffic Signs Regulations and General Directions 2016 and enable you to follow the guidance set out in the Traffic Signs Manual Chapter 5.

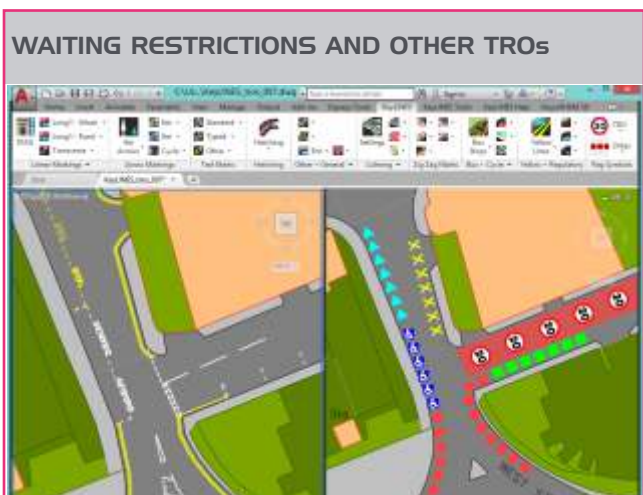
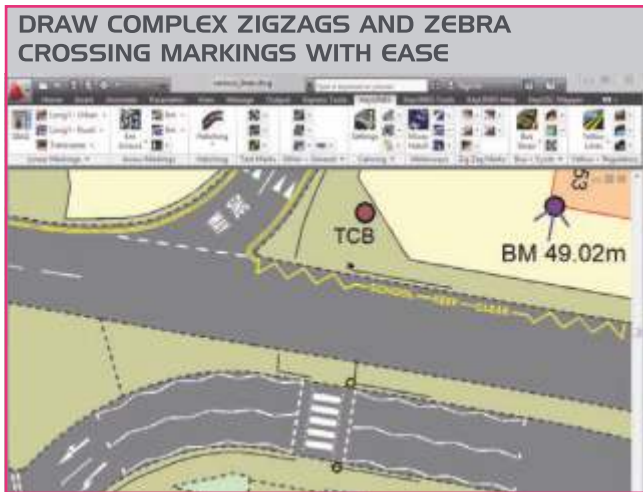
Full support for rich Building Information Models (BIM). Markings and street features include full data, and are automatically draped onto Civil 3D digital terrain and road corridor designs to provide fully realistic visualisations. Export your designs to IFC, GIS (SHP) or Navisworks.

KEYLINES AT A GLANCE

- Create road marking and traffic management drawings quickly
- Add BIM data to provide rich data models for analysis in Navisworks
- Automatic draping of road markings and street furniture on 3D surfaces
- Draw and edit complex markings as one
- Extract tables of quantities and estimate costs
- Keysoft Solutions' support services include training, user group meetings and upgrades, to keep you up to date with standards and legislation.

“KeyLINES helped us draw a large volume of road markings from the M1 to the M62 with relative ease, considering we had never used it before, in conjunction with KeySIGN it is a powerful combination.”

Michael Shepherd
Mott MacDonald



W: KEYSOFTSOLUTIONS.CO.UK

T: + 44 (0) 3451 30 30 40



FUTURE • FASTER